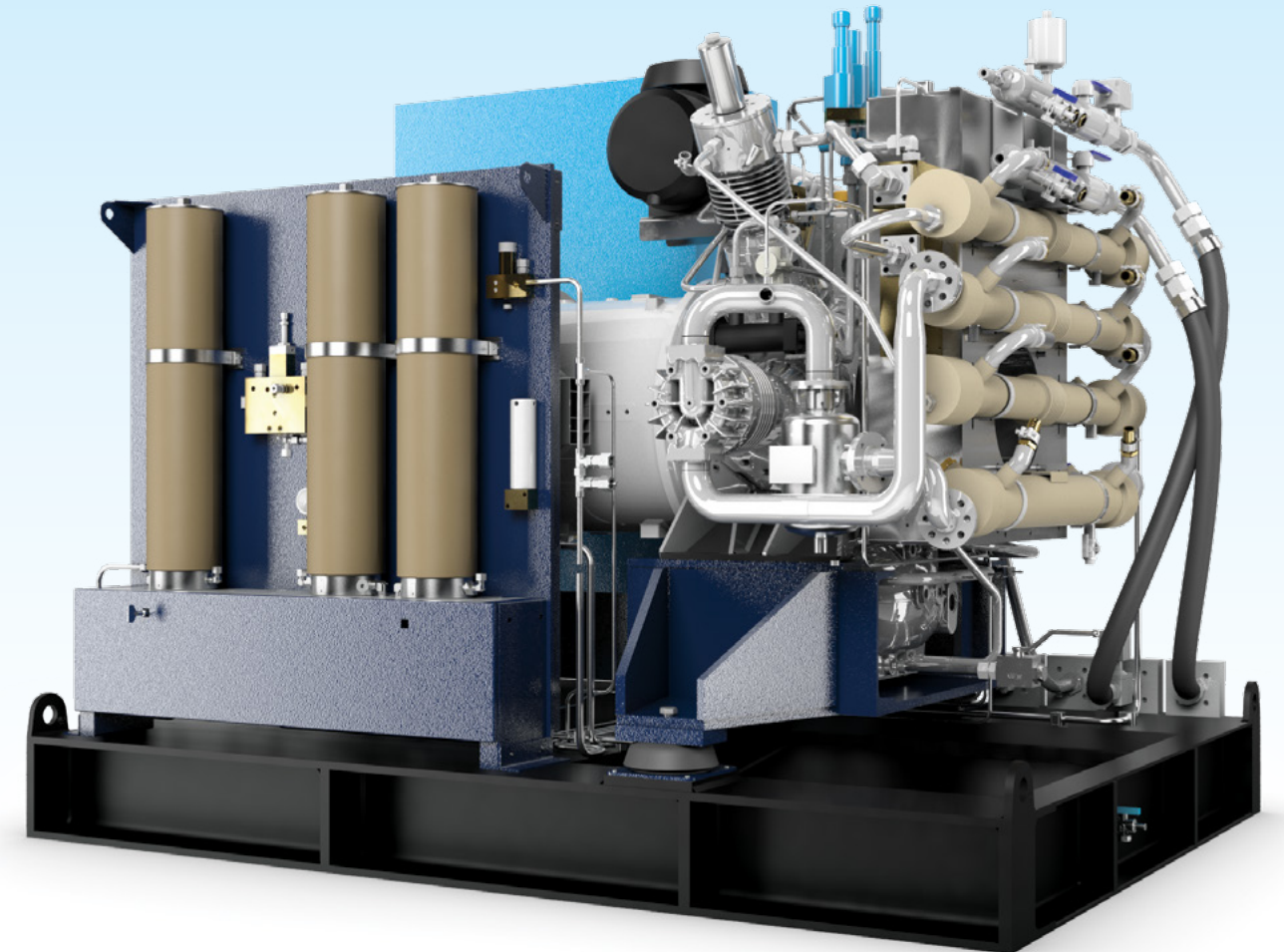


RIGFORCE™

High Pressure Air & Nitrogen Compressor Systems
For Offshore Applications



RIGFORCE™

LEARN MORE AT: www.BauerOilandGas.com

BAUER COMPRESSORS, INC.
1328 Azalea Garden Road
Norfolk, VA 23502
Tel. +1 (757) 855-6006
Fax +1 (757) 857-1041
www.BauerComp.com
www.BauerOilandGas.com



1026.05.16.200SP
Subject to technical changes

WORLDWIDE

QUALITY

INNOVATION

RELIABILITY



APPLICATIONS

- High pressure air/nitrogen for air over hydraulic applications.
- › Motion compensation
 - › Rig tensioning
 - › Accumulator charging



SYSTEM OPTIONS

- › Direct or belt drive
- › Water cooled or air cooled compressors
- › Air or nitrogen capable
- › Vertical/horizontal design
- › 0 to 550 PSIG (0-38 BAR) inlet pressure capable



DESIGNED AND BUILT FOR OFFSHORE

The BAUER RigForce™ line of high pressure compressors are designed and built specifically for offshore applications.

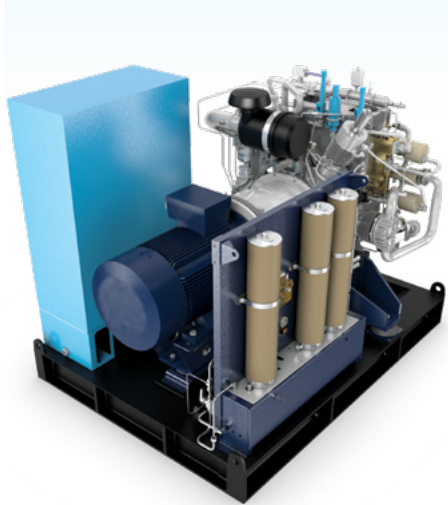
BENEFITS

- › **Robust build for offshore environments:** All RigForce™ systems are designed to operate continuously under the most severe offshore conditions (high salt, high temperature and high humidity).
- › **Compact footprint:** Especially engineered to minimize footprint in order to preserve valuable space on offshore facilities.
- › **Energy efficient:** Offshore power is premium; therefore, all BAUER RigForce™ systems are built to minimize energy usage.
- › **Low cost of ownership:** BAUER systems are known for their lowest cost of ownership in the industry. 2 Year Warranty, Lifetime Support Guaranteed.

TOTAL RANGE FOR EVERY APPLICATION

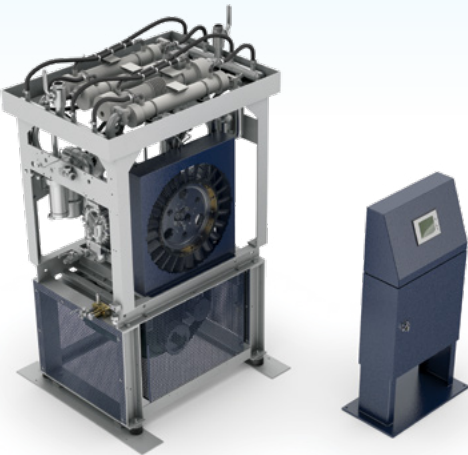
RIGFORCE™ L-SERIES

BAUER BK 26 Series
designed for high volume applications



RIGFORCE™ M-SERIES

BAUER BK 23 Series
designed for medium volume applications



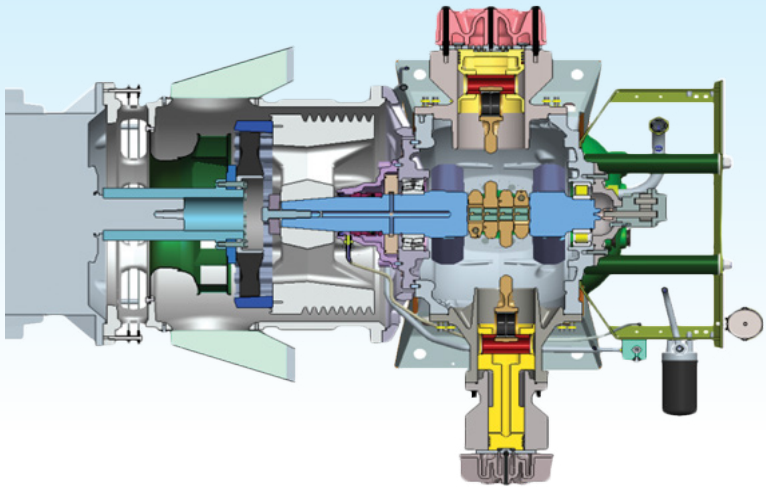
RIGFORCE™ LEGACY SERIES

BAUER I 280 Series
designed for applications where value is most important



THE HEART OF THE SYSTEM

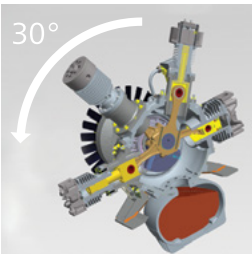
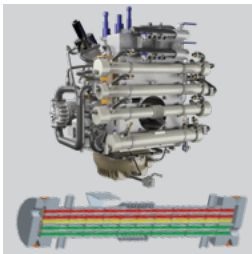
At the heart of every BAUER RigForce™ L & M Series High Pressure System lies the ultra modern, high efficiency BAUER BK 23 and BK 26 Series Compressors. These systems are specifically designed for rigorous, mission-critical, heavy-duty offshore applications where reliability and performance cannot be compromised.



MADE FOR HEAVY DUTY OFFSHORE USE

Ultra compact, high efficiency shell and tube heat exchangers for the compressor water cooling circuit keep the system footprint to a minimum and maximize heat transfer. Secondary heat exchangers can be installed to keep heat out of the installation room.

All RigForce™ L & M series compressor systems are built to accommodate the natural motion of offshore vessels up to inclinations of 30° (up to 10° for Legacy Series) without compromising system lubrication.



TECHNICAL DATA

Model	F.A.D. ¹			Inlet pressure		Final pressure				Number of Stages	Running Speed	Motor	
	L/MIN	M³/H	CFM	PSIG	BAR	PSIG	min	max	max			hp	kW
IB 23.0	1500	90	53	atm.	atm.	1300	5000	90	345	4	1420	50	37
I 26.0	3650	219	129	atm.	atm.	1300	5000	90	345	4	1485	125	90
I 280	2500	150	88	atm.	atm.	2900	5000	200	345	4	850	75	55
I 280	3500	210	123	atm.	atm.	2900	5000	200	345	4	1200	100	75
GIB 23.12	3100	185	109	145	10	2900	5000	200	345	4	1140	50	37
GIB 26.12	10200	612	360	145	10	2900	5000	200	345	4	1485	200	132

1) Note: All referenced capacities are at maximum inlet pressure. For all models, lower minimum inlet pressures are possible but will reduce final discharge pressure and capacity.

DIMENSIONS

L-SERIES:

- › 96.5” x 72.5” x 74”
(2451mm x 1842mm x 1880mm)

M-SERIES:

- › 126” x 56” x 83.5”
(3200mm x 1422mm x 2121mm)

LEGACY SERIES:

- › 126” x 56” x 69”
(3200mm x 1422mm x 1753mm)

*Dimensions and weight approximate

WEIGHT

L-SERIES:

- › 5500 lb (2495 kg)

M-SERIES:

- › 2700 lb (1225 kg)

LEGACY SERIES:

- › 4500 lb (2041 kg)

*Dimensions and weight approximate

CUSTOMER SUPPORT



GLOBAL SUPPORT



SINGLE SOURCE RESPONSIBILITY



LOW COST OF OWNERSHIP



LIFECYCLE PERFORMANCE

FOR MORE INFORMATION PLEASE VISIT:
www.BauerCustomerSupport.com

