

BAUER
COMPRESSORS

Quality. Our DNA

BAUER BLP™ 3 SERIES

› 15/20/25 HP › 125/145/175 PSIG



**HEAVY-DUTY
INDUSTRIAL QUALITY
LOW-PRESSURE
ROTARY SCREW
COMPRESSOR**



BAUER BLP™ 3 SERIES

› 15/20/25 HP › 125/145/175 PSIG

With over 75 years of proven BAUER compressor technology, the **BLP Series** is built for high performance and extreme durability. The **BLP Series** has been designed and built to last 20-25 years under harsh, continuous-duty operations with proper maintenance and care, thus offering the lowest overall cost of ownership over time.

At the heart of the system, BAUER utilizes the legendary state-of-the-art **BAUER ROTORCOMP® NK+** Compact line, oil injected rotary screw compressor in all their BAUER BLP™ compressor packages. The ROTORCOMP® Compact line combines all functional aspects of the compressor: Air inlet filter, inlet control valve, rotary screw compression compartment, oil sump and air / oil separator manifold all into one compact module for maximum space efficiency and ease of maintenance.

- › **Air inlet filter:** High-efficiency, heavy duty dust filter
- › **Inlet Control Valve:** Electronically controlled and designed for maximum air flow efficiency
- › **Compressor Technology:** air is compressed through two counter rotating steel screws. ROTORCOMP's proprietary rolling screw profile has been optimized with highly sophisticated 3-D modeling and simulation to provide the highest compression efficiency with minimum losses.
- › The integrated air / oil separator manifold contains the oil filter, air/oil separator filter, high precision thermal valve for regulation of oil injection temperature above pressure dewpoint, minimum pressure valve to assure that the internal pressure to maintain proper oil flow is always maintained.
- › The coalescing air/oil separator filter reduces the oil content of the discharge air to less than 5 mg m3 or approximately 2 ppm.

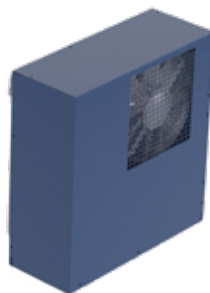


› **BAUER ROTORCOMP® NK** with integrated air/oil separator



› COMPRESSOR MODULE

BAUER ROTORCOMP® EVO-NK+ high-efficiency rotary screw compressor with integrated air/oil separator, drive motor on sliding base, belt drive system, combination air / oil cooler, coalescence and particulate filters (for dryer option), electrical panel, and all associated high-pressure tubing. Heavy-duty base skid and sound attenuated enclosure.



› DRYER MODULE (OPTIONAL)

MODEL SL-100 self-contained dryer module with Integrated on/off switch and pressure gauge. Dryer module contains vertically mounted air to air and air to refrigerant heat exchangers, condensate separator with automatic drain solenoid valve, refrigerant compressor, condenser with temperature regulated condenser fan.



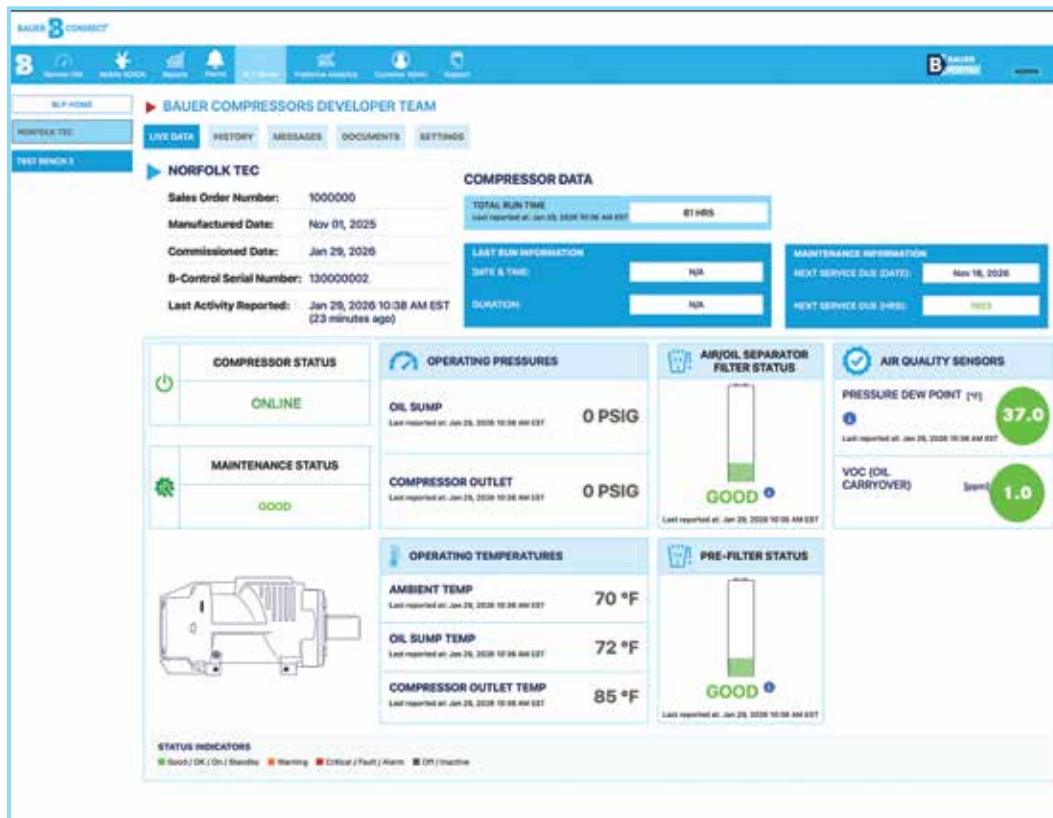
› TANK MODULE (OPTIONAL)

Heavy-duty powder-coated grasshopper-style steel tank with integrated supports, which facilitates moving the entire compressor system safely with a pallet jack or forklift. The receiver tank has an integrated heavy-duty, purpose-built top plate that carries the compressor module and dryer module.

COMPRESSOR AND AIR QUALITY MONITORING

BAUER CONNECT® IOT SOLUTION

All BAUER BLP rotary screw compressor packages are equipped with BAUER CONNECT® IoT, specifically designed for the BLP systems. Connection to the BAUER Cloud is via a secure VPN using 5G wireless technology. BAUER CONNECT for BLP has the following functionality:



› **System Overview:** The system overview displays essential information in real time, such as: System Status, Total Run Hours, Maintenance Status, Ambient Temperature, Sump Pressure and Temperature, Final Pressure and Temperature, as well as air/oil separator filter and coalescence filter status (if refrigerated dryer is part of the system).

› **History & Maintenance Tracking:** BAUER CONNECT provides graphical historical reports for all critical parameters measured by the system. These include run hours per day, all measured pressures and temperatures, and air quality sensor readings. Historical records are kept for 5 years.

› **Alarms/Messages:** All critical alarms and warnings generated by the compressor system are kept in the messages tab in chronological order (latest to oldest). Furthermore, all alarms are sent out via push notifications.

B-DETECTION™ COMPRESSED AIR QUALITY MONITORING SYSTEM (OPTIONAL)

B-DETECTION is a patented, high-precision, state-of-the-art compressed air quality monitoring system developed by BAUER. BAUER B-DETECTION is available with a variety of sensors, such as CO, CO₂, O₂, H₂O (moisture), VOC (oil/hydrocarbons), and, coming soon, particulates. The BAUER **B-DETECTION L** air quality monitoring system for the BAUER BLP rotary screw product line is a simplified version of the **B-DETECTION PLUS** system, an A2LA-certified scientific instrument backed by an independent third-party laboratory. B-DETECTION for the BAUER BLP is available with the following two independent modules, but can be expanded with other sensors as outlined in this paragraph:

- › Pressure Dew Point / Moisture Content Sensor Module
- › VOC Sensor Module

The B-DETECTION Sensors are fully integrated into the BAUER B-CONTROL™ compressor control system and the **BAUER CONNECT** IoT system. This means that air quality is monitored in real time anytime the compressor is running. If any of the measured air quality metrics are out of spec, BAUER CONNECT will immediately alert the end user, BAUER, and the BAUER Distributor (if applicable) via SMS and e-mail. Since the B-DETECTION system is fully integrated into the B-CONTROL compressor control system, the compressor can be stopped from operating if the air quality specs are not met.

WARRANTY AND SUPPORT

The BAUER BLP Series is backed by BAUER's 5-year bumper-to-bumper warranty and 10-year air-end warranty, supported by BAUER's nationwide network of Factory Authorized Bauer Distributors. The stated warranties (5-year bumper to bumper and 10-year air end) require that all required maintenance on the units be performed in accordance with BAUER's 2000-hour maintenance schedule using only Bauer factory-trained service personnel (Authorized BAUER Distributor or BAUER personnel) and Original BAUER OEM parts, including lubricants, filters, rebuild kits, etc.

Warranty exclusions:

- › Normal mechanical wear and tear items, which are subject to Bauer's 2000-hour maintenance cycles
- › Electronic wear and tear items such as relays and contactors
- › Refrigerated dryer warranty is limited to two (2) years

Note: Compressor oil samples are required every 2000 hours as part of the regular maintenance cycles. Severe-duty applications in harsh operating environments may require more frequent maintenance than the standard 2000-hour intervals.

STANDARD SCOPE OF SUPPLY

- › BAUER ROTORCOMP® EVO-NK+ high-efficiency screw air-end with integrated air/oil separator manifold
- › Oil filter, inlet air filter, air/oil separator filter
- › Horizontal belt-drive with NEMA ODP motor
- › Combination air/oil cooler with NEMA motor
- › BAUER B-CONTROL™ with touchscreen HMI
- › BAUER CONNECT® IoT remote monitoring module
- › Heavy-duty base skid and noise attenuation enclosure
- › Stainless steel tubing
- › 5-year bumper-to-bumper warranty, 10-year air-end warranty

OPTIONS

- › Integrated B-DETECTION™ Technology for VOC and Dew Point monitoring
- › Compressor module only option without receiver tank and refrigerated dryer
- › Coalescing filter and particulate filter (standard with dryer module)
- › **Tank module:** Heavy-duty powder-coated grasshopper-style steel tank.

SYSTEM FOOTPRINT

DIMENSIONS L X W X H inches (mm)

- › 73.781" x 36.75" x 73.875" (1874.04mm x 933.45mm x 1876.43mm)

WEIGHT pounds (kg)

- › 2000 lb (907.18 kg)

BAUER BLP 3 SERIES TECHNICAL DATA

Model	Motor		Discharge Pressure		Max Flow Performance	
	HP	kW	PSIG	BAR	SCFM	M³/H
BLP 3-15 SERIES						
BLP3-15.125	15	11	125	9	57	97
BLP3-15.145	15	11	145	10	52	89
BLP3-15.175	15	11	175	12	47	80
BLP 3-20 SERIES						
BLP3-20.125	20	15	125	9	76	130
BLP3-20.145	20	15	145	10	72	122
BLP3-20.175	20	15	175	12	64	109
BLP 3-25 SERIES						
BLP3-25.125	25	18.5	125	9	93	158
BLP3-25.145	25	18.5	145	10	87	147
BLP3-25.175	25	18.5	175	12	77	131

Performance values shown are based on the following reference conditions: ISO 1217 (14.5 psi, 68 °F, 0% RH). Air temperature at compressor inlet is 68 °F.

BAUER COMPRESSORS, INC.

1328 Azalea Garden Road

Norfolk, VA 23502

Tel. +1 (757) 855-6006

Fax +1 (757) 857-1041

industrialair@bauercomp.com

www.BauerComp.com



SCAN TO DOWNLOAD THE PDF



Connect with us.

1782.09.25
Subject to technical changes