

# BAUER INDUSTRIAL AIR SOLUTIONS





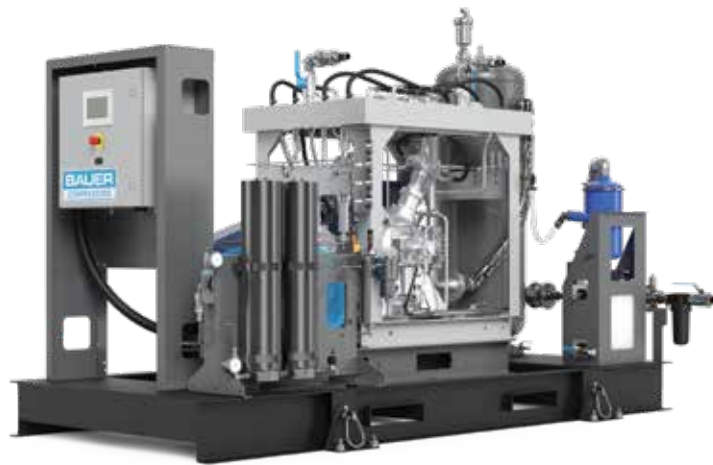
## VERSATILE SOLUTIONS FOR A VARIETY OF APPLICATIONS

BAUER Industrial Air Systems are available in a wide range of package configurations and flow rates to meet most requirements for pressures of 290 - 7000 psi. With air-cooled, continuous duty rated systems from 5-150 HP and water-cooled, continuous duty systems from 100-500 HP, BAUER can provide a complete turnkey system for almost any high-pressure air demand. For special requirements, BAUER can modify a standard package, or design a custom package specific to the customer's needs.

## HIGH-PRESSURE COMPRESSOR SYSTEMS

BAUER designs and builds high-pressure systems for nearly any industrial application across commercial sectors, from aerospace to energy. These air-cooled systems range from 5-125 scfm and are built with 2-, 3-, 4-, and 5-stage compressors. Our cutting-edge technology provides efficient compression. For special requirements, BAUER can modify a standard package or design a custom package to your specific needs.

- › 1000 - 7000 PSI (69 - 483 BAR) Outlet Pressure
- › 4 - 125 SCFM (100 - 3540 l/min)
- › 5 - 100 HP (3.7 - 75 kW)



## MEDIUM-PRESSURE COMPRESSOR SYSTEMS

The BAUER BMP™ Series air compressors have been designed and built by BAUER with the same commitment to legendary reliability that BAUER is known for across the globe. Every BAUER product is built with a 20 - 30 year product lifecycle expectation. With the optional BAUER CONNECT® remote control and IoT overlay, the entire BMP™ compressor system can be monitored 24/7 through BAUER's propriety AI software which automatically sends out alerts if system parameters run out of spec. This allows for intervention before an unexpected shutdown occurs.

- › 290 - 1450 PSI (20 - 100 BAR) Outlet Pressure
- › 27 - 247 SCFM (46 - 420 m³/h)
- › 20 - 175 HP (15 - 132 kW)



## HIGH-PRESSURE COMPRESSORS FOR HEAVY-DUTY APPLICATIONS

### BAUER I-SERIES I

Compact Design for Low-Flow Applications  
Air-Cooled - 3-, 4-, and 5-Stage Compressors

#### OPEN DESIGN SYSTEM FOOTPRINT

**DIMENSIONS L x W x H inches (mm) approx.**

- › 54" x 34" x 56" (1372.6 mm x 863.6 mm x 1422.4 mm)

**WEIGHT pounds (kg) approx.**

- › 800 - 900 lbs (363 - 408.2 kg)

#### ENCLOSED DESIGN SYSTEM FOOTPRINT

**DIMENSIONS L x W x H inches (mm) approx.**

- › 55" x 35" x 70" (1397 mm x 889 mm x 1778 mm)

**WEIGHT pounds (kg) approx.**

- › 800-1400 lbs (363-635 kg)



› I-SERIES I  
VACI - Enclosed Design

› I-SERIES I  
VECI - Open Design

## TECHNICAL DATA

Model	FAD <sup>1)</sup>		Number of stages	Motor		Drive
	SCFM	L/MIN		HP	KW	
<b>5000 PSIG (345 BAR)</b>						
V*CI120	7.6	215	3	7.5	5.5	E1/E3
V*CI150	18	510	4	15	11	E3
V*CI180	21	600	4	20	15	E3
<b>6000 PSIG (414 BAR)</b>						
V*CI100 H	4	113	5	5	3.7	E1/E3
V*CI12.14	8.1-10.8	229-306	4	7.5 - 10	5.5 - 7.5	E1/E3
V*CI15.11 <sup>2</sup>	15	425	4	15	11	E3
V*CI18.1 <sup>2</sup>	18.2	515	5	20	15	E3

\* E = Enclosed Design, A = Open Design

1) Volume flow rate according to ISO 1217.

2) Models 15.11 And 18.1 are available for 7000 psig final pressure.

E1 = 230 / 1 / 60

E3 = 460/3 / 60

Other voltages and frequencies are available upon request.



## BAUER I-SERIES II

Air-Cooled Compressors Designed for High-Flow Applications

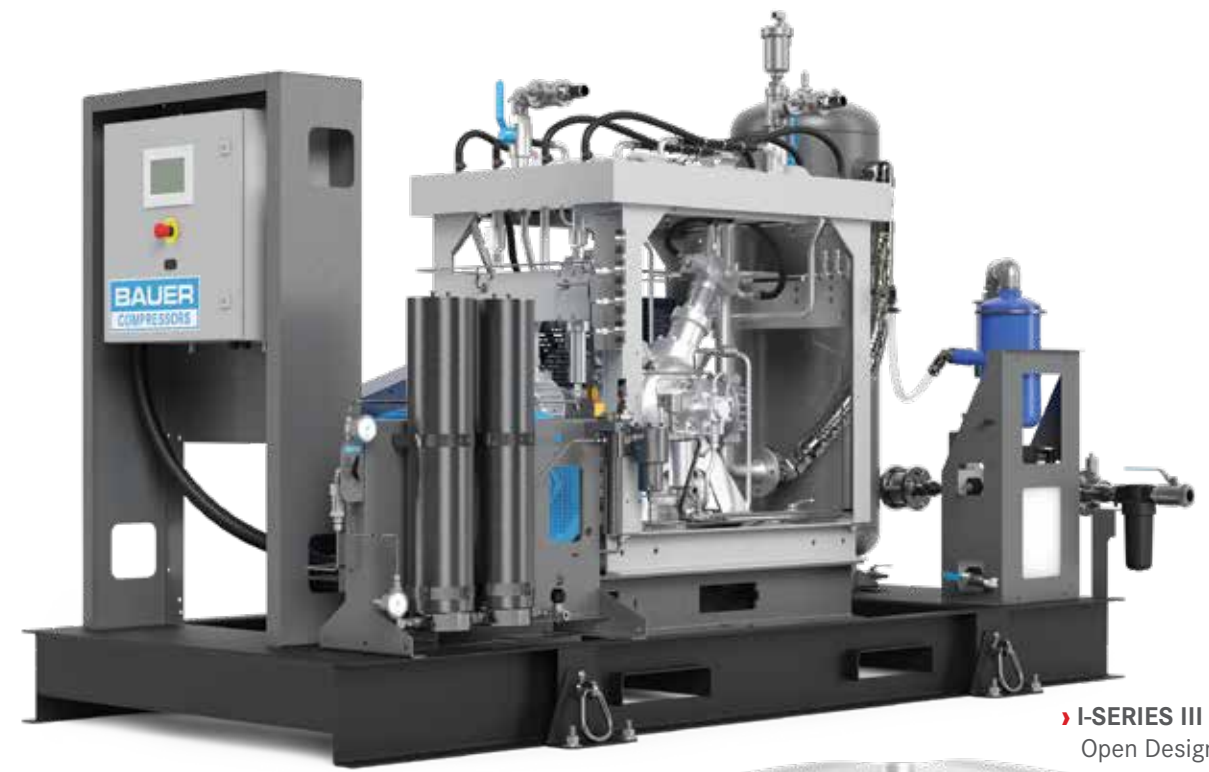
### SYSTEM FOOTPRINT

DIMENSIONS L x W x H inches (mm)

- › I220: 95" x 44" x 61" (2413mm x 1117mm x 1549.4mm)
- › I230 (shown): 92" x 44" x 61" (2337mm x 1117mm x 1549.4mm)
- › I250: 116" x 84" x 67" (2946.4mm x 2134mm x 1702mm)

WEIGHT pounds (kg) approx.

- › 1200-5000 (544-2268)



## BAUER I-SERIES III

Air-Cooled Booster Compressor Designed for High-Flow Applications

### SYSTEM FOOTPRINT

DIMENSIONS L x W x H inches (mm)

Enclosed Design

- › 133" x 104" x 115" (3378 mm x 2642 mm x 2921 mm)

Open Design

- › 138" x 56" x 84" (3505 mm x 1422 mm x 2134 mm)

WEIGHT pounds (kg) approx.

Enclosed Design

- › 10000 lbs (4535 kg)

Open Design

- › 4500 lbs (2041 kg)



## TECHNICAL DATA

Model	FAD <sup>1)</sup>		Number of stages	Motor		Drive
5000 PSIG (345 BAR)	SCFM	L/MIN		HP	KW	
I220	25-33	708-935	4	25-30	18.5-22	E3
I230	48	1360	4	40	30	E3
I250	67	1785	4	60	45	E3
I280	88-125	2435-3400	4	75-100	55-75	E3
6000 PSIG (414 BAR) <sup>3)</sup>	SCFM	L/MIN		HP <sup>2)</sup>	KW	
I22.42	27-31	765-880	4	25-30	18.5-22	E3
I25.9 <sup>2)</sup>	67	1785	5	60	45	E3
I25.18 <sup>2)</sup>	81	2266	5	75	56	E3

1) Volume flow rate according to ISO 1217.

2) Models I25.9 and I25.18 are available for 7000 psig final pressure.

E3=460/3/60

Other voltages and frequencies are available upon request.

## TECHNICAL DATA

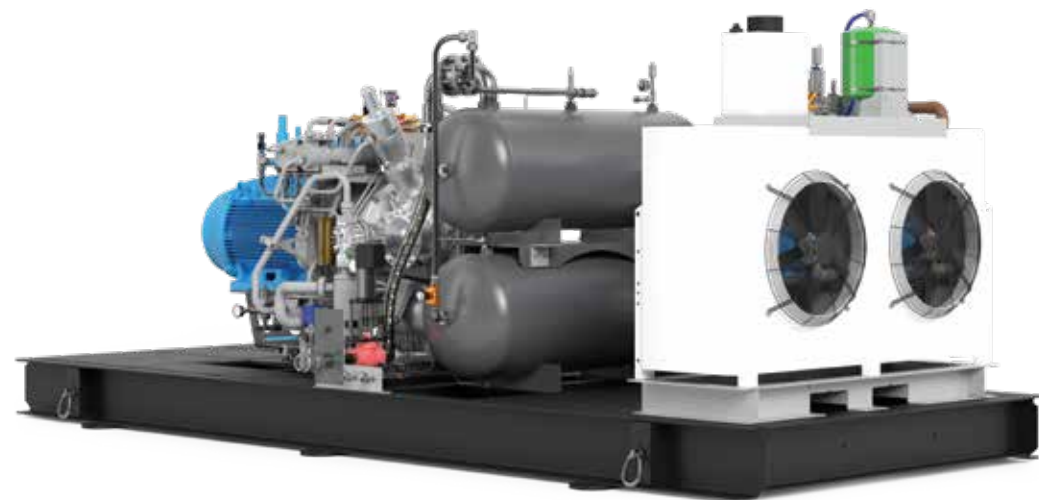
Model	Max Inlet Pressure		Capacity FAD <sup>1)</sup>		RPM	Number of Stages	Motor		Drive
	PSIG	BAR	SCFM	M <sup>3</sup> /HR			HP	KW	
<b>UP TO 5000 PSIG OPERATING PRESSURE (ELEVATED INLET PRESSURE) <sup>2)</sup></b>									
IB23.10	29 - 65	2 - 4.5	47 - 86	80 - 146	1170	4	60	45	E3
IB23.12	65 - 145	4.5 - 10	60 - 116	102 - 198	1170	4	60	45	E3
IB23.13	116 - 203	8 - 14	74 - 124	126 - 210	1170	4	50	37	E3

1) Volume flow rate according to ISO 1217.

2) Lower inlet pressure can result in lower operating pressure.

E3=460/3/60

Other voltages and frequencies are available upon request.



› I-SERIES 4  
Open Design



› I-SERIES 5  
Open Design

## BAUER I-SERIES 4

Water-Cooled Booster Compressor Designed for High-Flow Applications

### SYSTEM FOOTPRINT

#### DIMENSIONS L x W x H inches (mm)

- › 216"-297.6 L x 87.6-99.6" W x 117" H  
(5486.4-7543.8 mm x 2225.04-2529.84 mm x 2971.8 mm)

#### WEIGHT pounds (kg) approx.

- › 18000 -22700 lbs (8165 -10297 kg)



› I-SERIES 4  
Enclosed Design

## BAUER I-SERIES 5

Water-Cooled Compressor Designed for High-Flow Applications

### SYSTEM FOOTPRINT

#### DIMENSIONS L x W x H feet (mm)

- › 24' x 8' x 9.5'  
(7315 mm x 2438 mm x 2895 mm)

#### WEIGHT pounds (kg) approx.

- › 25000 lbs (11340 kg)



› I-SERIES 5  
Enclosed Design

## TECHNICAL DATA

Model	Max Inlet Pressure		Capacity FAD <sup>1</sup>		RPM	Number of Stages	Motor		Drive
	PSIG	BAR	SCFM	M <sup>3</sup> /HR			HP	KW	
<b>UP TO 5000 PSIG OPERATING PRESSURE (ELEVATED INLET PRESSURE) <sup>2</sup></b>									
IB26.0 <sup>3</sup>	atm	atm	116	198	1485	4	100	75	E3
IB26.10	29 - 65	2 - 4.5	184 - 339	312 - 576	1485	4	177 - 200	132 - 160	E3
IB26.12	65 - 145	4.5 - 10	191 - 381	324 - 648	1485	4	175	132	E3
IB26.13	145 - 217	10 - 15	275 - 403	468 - 684	1485	4	175	132	E3
IB52.0 <sup>3</sup>	atm	atm	233	396	1485	4	215	60	E3
IB52.10	29 - 65	2 - 4.5	371 - 678	630 - 1152	1485	4	350	250	E3
IB52.12	65 - 145	4.5 - 10	381 - 766	648 - 1302	1485	4	350	250	E3
IB52.13	145 - 217	10 - 15	551 - 805	936 - 1368	1485	4	350	250	E3

1) Volume flow rate according to ISO 1217.

2) Lower inlet pressure can result in lower operating pressure. Contact BAUER for min./max. operating pressure relative to inlet pressure.

3) These models are atmospheric intake air compressors.

E3=460/3/60

Other voltages and frequencies are available upon request.

## TECHNICAL DATA

Model	Capacity FAD <sup>1</sup>		RPM	Number of Stages	Motor		Drive
	SCFM	M <sup>3</sup> /HR			HP	KW	
<b>UP TO 5000 PSIG</b>							
GRU6/9 & IB23.12 (XXL)	116	198	1500	5	550	410	E3
GRU9/15 & IB26.12 (XXL)	381	648	1500	5	550	410	E3
GRU28 & IB52.12 (XXL)	766	1302	1500	5	550	410	E3

1) Volume flow rate according to ISO 1217.

Available for elevated intake pressure (Air/Nitrogen) up to 25 psig.

E3=460/3/60

Other voltages and frequencies are available upon request.



# MEDIUM PRESSURE COMPRESSORS FOR HEAVY-DUTY APPLICATIONS

## SYSTEM SPECIFICATIONS

### CONFIGURATION:

- ▶ 2 or 3 stage

### FLOW RATE:

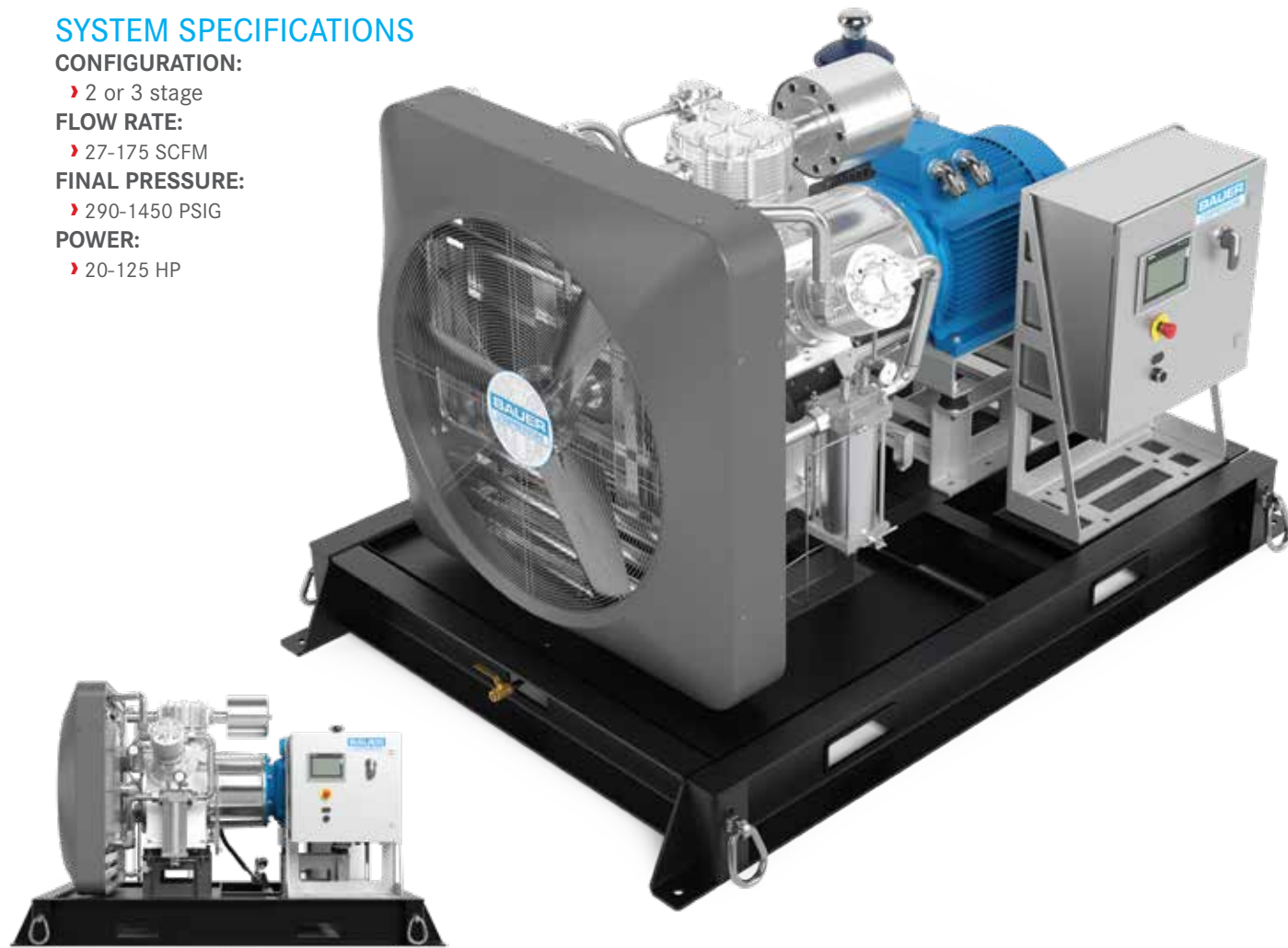
- ▶ 27-175 SCFM

### FINAL PRESSURE:

- ▶ 290-1450 PSIG

### POWER:

- ▶ 20-125 HP



## BAUER BMP™ SERIES:

### LEGENDARY BAUER PERFORMANCE AND RELIABILITY IN A MEDIUM-PRESSURE AIR COMPRESSOR

For 75 years BAUER has been the world's leader in high-pressure compressors ranging from 3600 – 7000 PSIG. We are proud to announce the arrival of our medium-pressure BAUER BMP™ Series air compressors which are designed for continuous, heavy-duty applications in the Industrial, Maritime and Hydropower market segments.

## PERFORMANCE:

The BAUER BMP™ Series air compressors offer a wide size range from 20 -125 HP with flow rates from 27 -175 (SCFM). The BMP™ Series is available in a 2-stage design for final pressures up to 435 PSIG (30 bar) or 3-stage design for final pressures up to 1450 PSIG (100 bar).

## RELIABILITY:

The BAUER BMP™ Series air compressors have been designed and built by BAUER with the same commitment to legendary reliability that BAUER is known for across the globe. Every BAUER product is built with a 20 – 30 year product lifecycle expectation. With BAUER CONNECT® remote control and IoT overlay, the entire BMP™ compressor system can be monitored 24/7 through BAUER's propriety AI software, which automatically sends out alerts if system parameters run out of spec. This allows for intervention before an unexpected shutdown occurs.

## SUPPORT:

The BAUER BMP Series compressors are covered by the same BAUER Lifecycle Performance Guarantee as all other BAUER products. This includes uninterrupted spare parts support for the product's lifecycle and 24/7/365 technical support directly through BAUER or BAUER's extensive network of Local Authorized Distributors.

## CODES AND SPECIFICATIONS:

- **Operating temperature range:** 40° F – 113°F (5° C – 45°C)
- **Electrical Code:** UL / NEC
- **Power:** 460 volts, 60 Hz, 3-phase

## OTHER FEATURES AND BENEFITS:

- Compact design makes the BMP™ Series ideal for operations where space is at a premium.
- Low center of gravity with the ability to operate at inclinations up to 30° under motion makes this an ideal product for ship-board applications.
- Integrated oil pump provides forced lubrication to all essential components of the compressor under the most severe operating conditions, thus extending the life of all critical components such as cylinders, pistons, and valves.
- Air-cooled design with a large cooling fan provides optimal cooling across all cylinders in high-temperature conditions.
- All compression stages are protected with integrated inter-stage safety valves.
- Integral inter-stage separators ensure 99% efficiency of condensate removal.
- Automatic condensate drains with condensate collection provide worry-free operation.
- PLC control with touchscreen HMI provides ease of operation as well as a comprehensive system overview and ease of parameter setting.
- Heavy-duty skid with integrated fork-lift pockets and structural tie-downs
- Interstage pressure and temperature monitoring
- Integrated oil containment pan with drain valve
- BAUER CONNECT® remote control and IoT



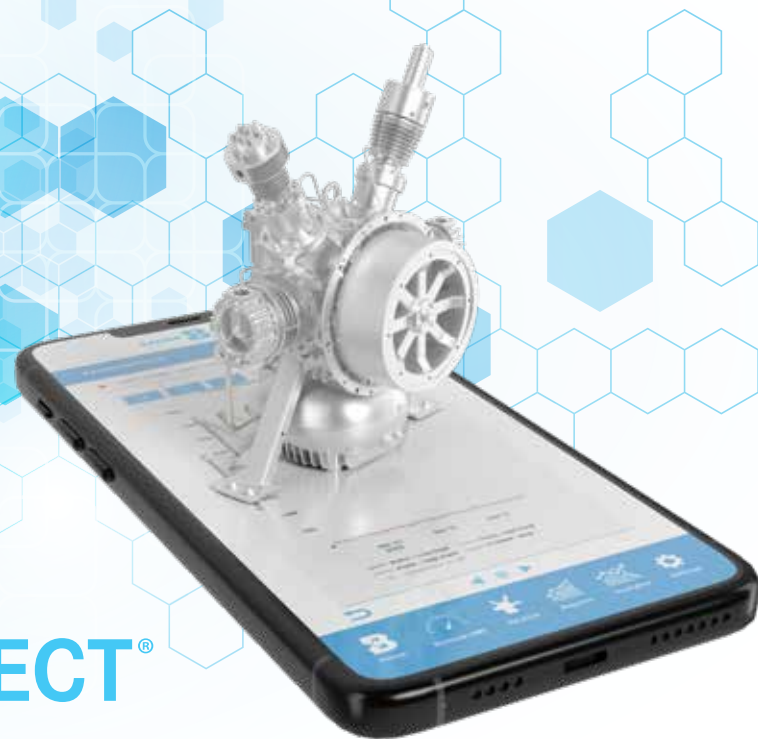
## TECHNICAL DATA

Model	Flow Rate <sup>1</sup>		Final Pressure <sup>2</sup>		Motor Speed <sup>+</sup>	Motor Size		Power Consumption <sup>3</sup>	Weight	
	scfm	m <sup>3</sup> /h	psig	barg		hp	kW		lbs	kg
<b>MEDIUM PRESSURE SERIES: 2-STAGE COMPRESSION UP TO 435 PSIG (30 barg) 60Hz</b>										
BMP6.1/30-15	33	55.8	435	30	1775	20	15	12.5	860	390
BMP10.1/30-18.5	41	69	435	30	1775	25	18.5	15.4	959	435
<b>MEDIUM PRESSURE SERIES: 3-STAGE COMPRESSION UP TO 580 PSIG (40barg) 60Hz</b>										
BMP6.1/40-15	28	60	580	40	1770	20	15	11.3	882	400
BMP10.1/40-18.5	46	78	580	40	1780	25	18.5	17.7	970	440
BMP20.1/40-37	94	160.2	580	40	1780	50	37	35.5	2050	930
BMP30.1/40-55	132	225	580	40	1780	75	55	50.9	2425	1100
BMP60.1/40-75	175	297.6	580	40	1185	100	75	66	4982	2260
<b>MEDIUM PRESSURE SERIES: 3-STAGE COMPRESSION UP TO 1450 PSIG (100barg)</b>										
BMP6.1/100-15	27	45.6	1450	100	1775	20	15	13.5	882	400
BMP10.1/100-22	45	76.8	1450	100	1780	30	22	21.8	1003	445
BMP20.1/100-45	93	157.2	1450	100	1780	60	45	44.3	2183	990
BMP30.1/100-75	130	221.4	1450	100	1780	100	75	62.3	2668	1210
BMP60.1/80-90	173	294.6	1160	80	1185	125	90	77.5	5225	2370

<sup>1</sup> Volume flow rate according to ISO 1217 <sup>2</sup> Safety valve setting at 1.1 times of shut-down pressure <sup>3</sup> Power consumption at shut-down pressure. E3=460/3/60

Other voltages and frequencies are available upon request.

# BAUER CONNECT®



## IOT REMOTE TELEMETRY AND CONTROL

BAUER CONNECT® is an app and internet-based IoT solution that allows BAUER customers to remotely monitor - and control - the performance of the entire BAUER system through any wireless mobile device or computer; anytime, anywhere.

**Key Features:** allow customers to increase efficiency and productivity, save time, do more with fewer resources, enjoy lower operational costs, and have total flexibility with a solution tailored specifically for the end-user.

BAUER CONNECT® - Connection that matters.

### BAUER REMOTE HMI

The BAUER Remote HMI function allows factory-trained technical personnel to remotely control the BAUER system via the BAUER CONNECT® App with the same functionality as if one were standing in front of the actual unit.

### MOBILE DASHBOARDS

BAUER CONNECT® App will also display a real-time graphical display of the entire system (SCADA view). The Mobile Dashboard feature provides information such as compressor system status, error log, critical pressures and temperatures, and volume of air dispensed in storage information, etc.

### NOTIFICATIONS

The BAUER CONNECT® Mobile App will send push notifications if certain critical parameters of the BAUER system fall outside of normal operating range, or if triggered by a system alert. This ensures that essential personnel is notified immediately, thus allowing for pro-active intervention in a situation that could potentially be detrimental to the BAUER system as well as the customer's operation.

### BAUER REPORTS

The BAUER Reports feature is a function that generates custom reports tailored to the specific needs of the customer. Customers can have access to historical data via a multitude of standard and customized reports.

### BAUER PREDICTIVE ANALYTICS

This feature of BAUER CONNECT® provides a new pro-active dimension to perpetually maintaining customers' compressor systems at peak conditions with minimum downtime. BAUER's predictive analytics algorithm uses artificial intelligence to analyze the collected system information on the BAUER Cloud to predict upcoming maintenance requirements and preventative actions to avoid unplanned shutdowns.

## LIFECYCLE PERFORMANCE

BAUER is committed to the lifecycle performance of its customers

### PARTS



OEM PARTS WARRANTY



RAPID DELIVERY

### QUALITY AND RELIABILITY

Our factory-original replacement parts assure you that when maintenance or repair is performed, you are restoring the unit to its original specifications and performance.

### PARTS: COMPATIBILITY

We configure our designs with interchangeability and our end user in mind. You can count on parts being available for all BAUER models.

[PartsSales@BauerComp.com](mailto:PartsSales@BauerComp.com) or 1-(844)-500-5822



7 PLUS, OVER 10,000 OEM PARTS

- |                             |                       |
|-----------------------------|-----------------------|
| 1. Purification             | 5. Valves             |
| 2. Gaskets and Seals        | 6. Air Intake Filters |
| 3. Lubricants               | 7. All 10,000+ Parts  |
| 4. Fill Hose and Assemblies |                       |

### BAUER HELPDESK



24-7 PHONE TECH SUPPORT



LIFECYCLE PERFORMANCE

### TRAINING TOPICS

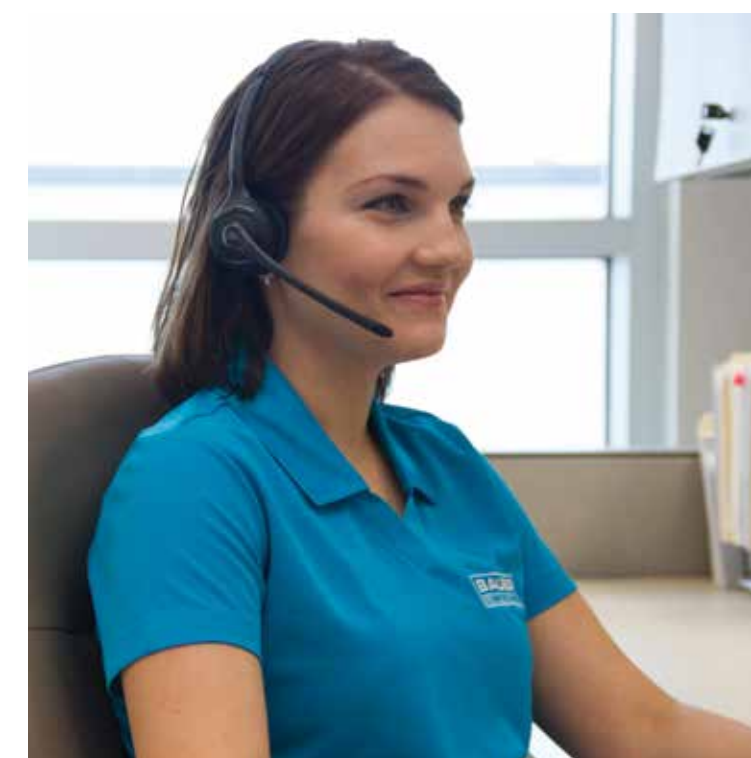
Total customer satisfaction is our top priority. BAUER provides 24-7 phone tech and **troubleshooting** support at our BAUER Helpdesk. Our support continues throughout our warranty period and beyond.

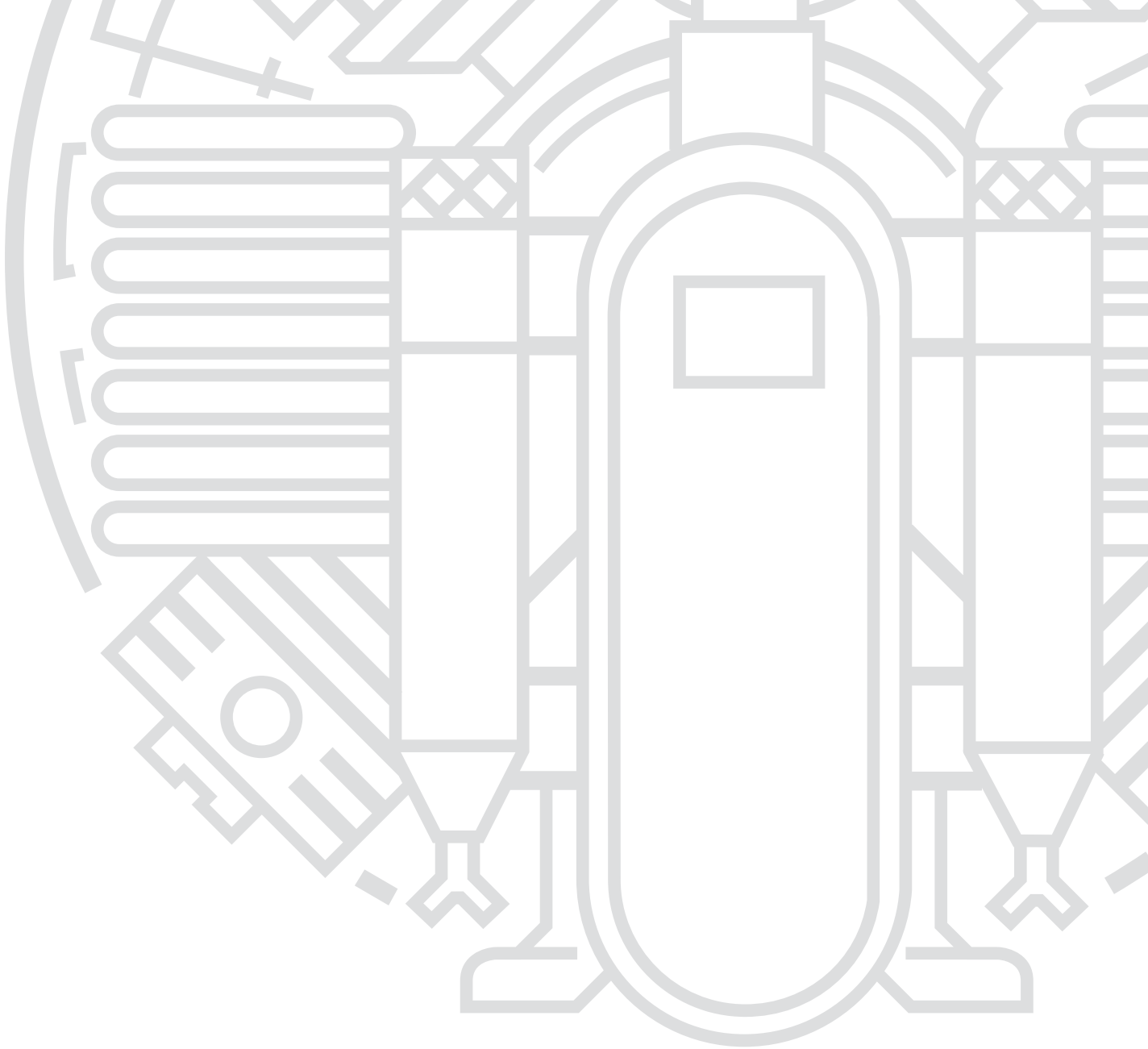
»»» For BAUER Helpdesk please email:

[CustomerService@BauerComp.com](mailto:CustomerService@BauerComp.com)

or call at:

1-(844)-500-5822





**BAUER COMPRESSORS, INC.**  
1328 Azalea Garden Road  
Norfolk, VA 23502  
Tel. +1 (757) 855-6006  
Fax +1 (757) 857-1041  
[industrialair@bauercomp.com](mailto:industrialair@bauercomp.com)  
[www.BauerComp.com](http://www.BauerComp.com)



SCAN TO DOWNLOAD THE PDF

1782.10.24  
Subject to technical changes